



SP Infinite
安寶創科有限公司

SP Intelligence

SP Intelligence



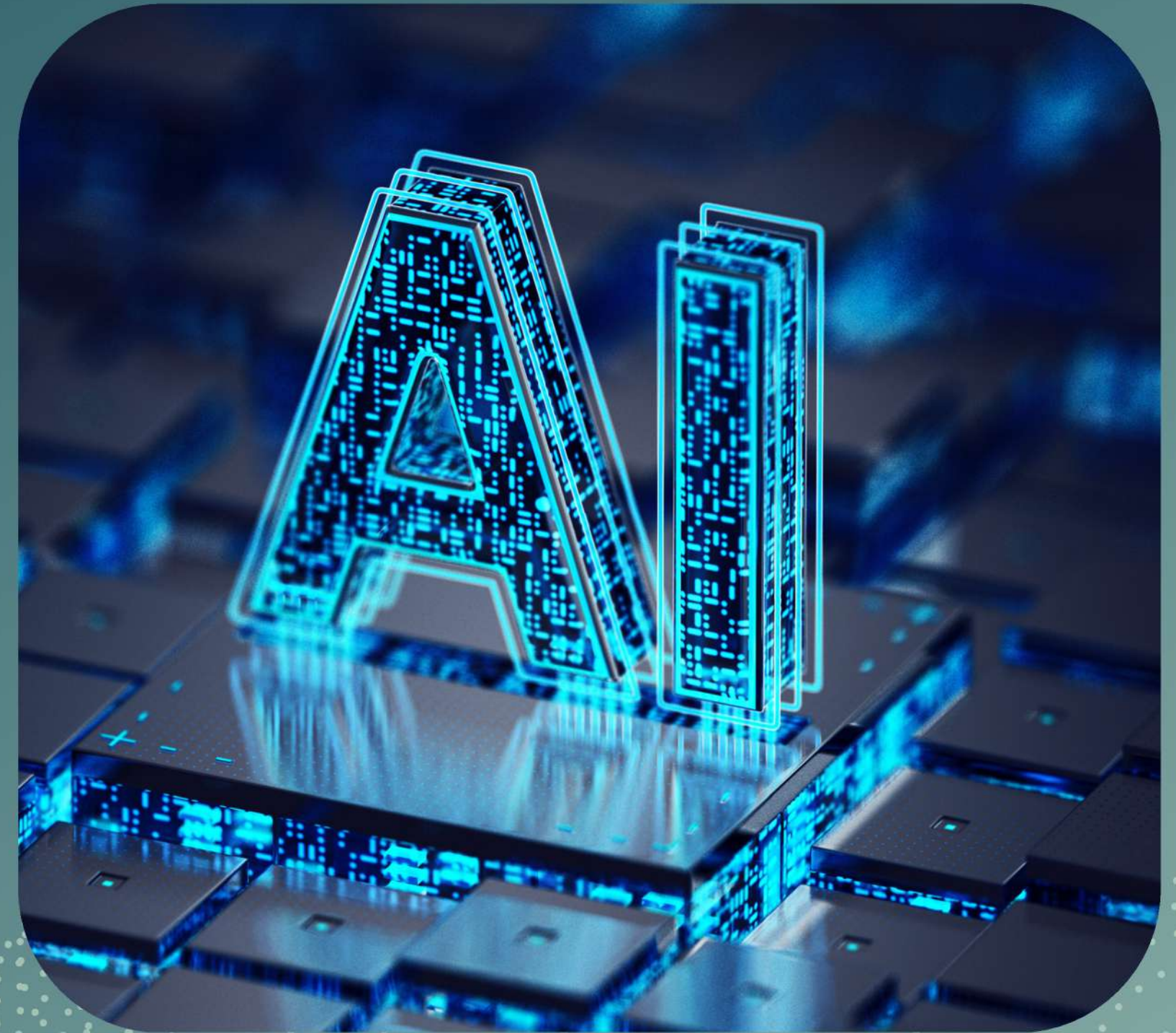
Email Classification
For School/Enterprise



Local AI Assistant
On-Premises/Online



Website Chatbot



AI Email Classification

Organizations receive a large amount of emails every day



contact@info.edu

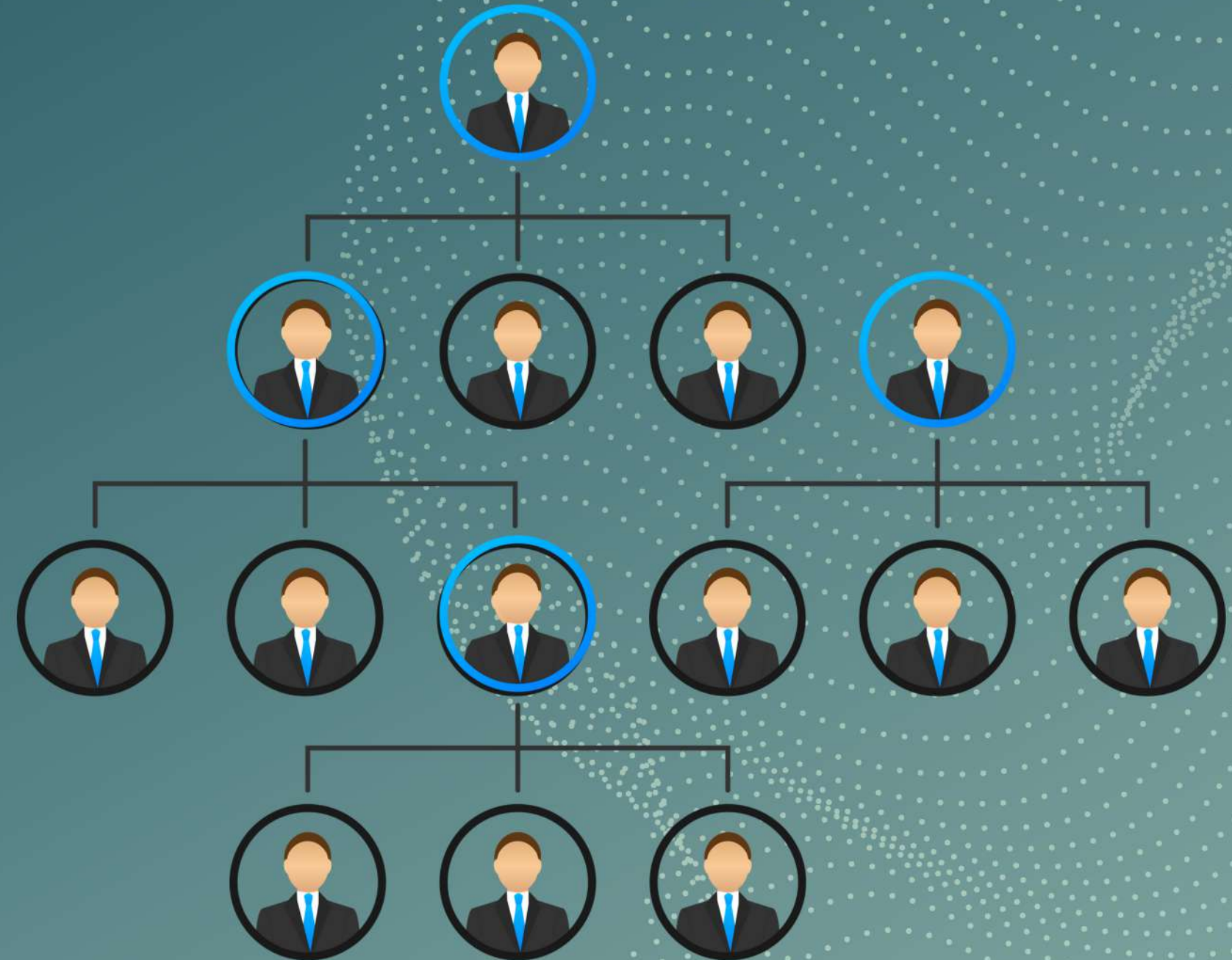
AI Email Classification



contact@info.edu



Admin



Organizational Structure

AI Email Classification Program Logic Flow



Pre-defined Department Functions



Interface

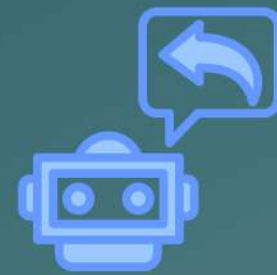


Usages of Email Classification in Administration



Keep Organized

Turn high volume enquiry emails into categories like "Admissions," "Student Support," "Staff Meetings," etc., making it easier to manage



Automated Responses

Routine inquiries, such as general information requests, can be automatically responded to with pre-written templates



Keep Informed

Ensures that important messages reach the right people quickly by automatically forwarding emails to relevant staff based on categories



Data Analysis and Reporting

Classifying emails allows data analysis by tracking the number of inquiries can help in resource allocation and planning.



Compliance+Record-Keeping

Schools need to comply with various regulations and maintain records of communications



Spam and Phishing Detection

Identify and filter out spam and phishing attempts, protecting sensitive information and maintaining cybersecurity.

SP Intelligence



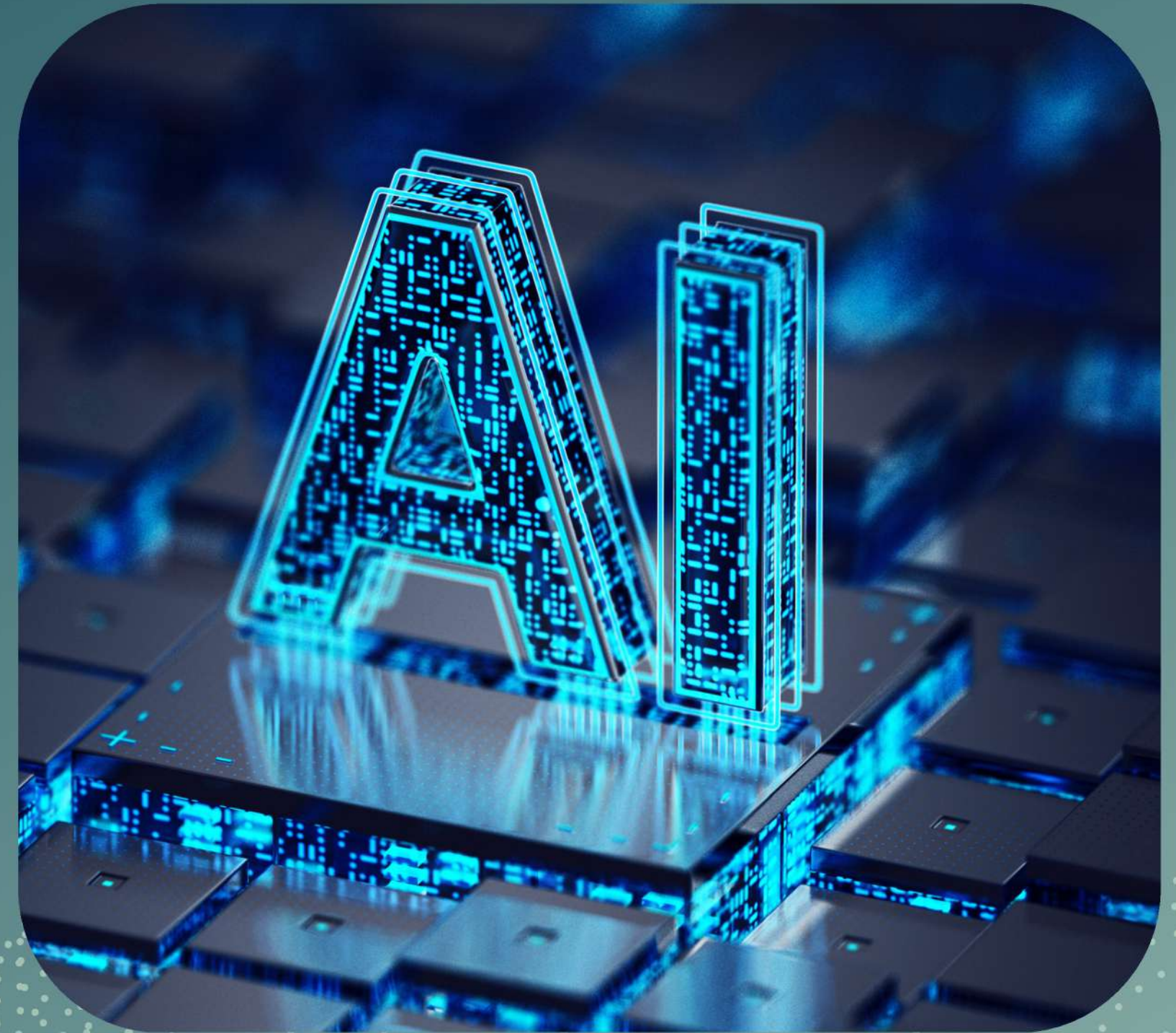
Email Classification
For School/Enterprise



Local AI Assistant
On-Premises/Online



Website Chatbot



Local A.I. Model Solution

On-Premises	Deepseek	Qwen	Llama	Gemma
Online	Deepseek	ChatGPT	Claude	Gemini



A.I. Writing

Generate emails, reports, internal announcements, product descriptions, customer emails



A.I. Translation

Break language barriers with translation services for diverse learners.



PPT Guidelines

Provide outlines and ideas



Document Summary

Summarize lengthy documents quickly, saving valuable time for educators and students.

Admin AI Assistant (On-Premises)



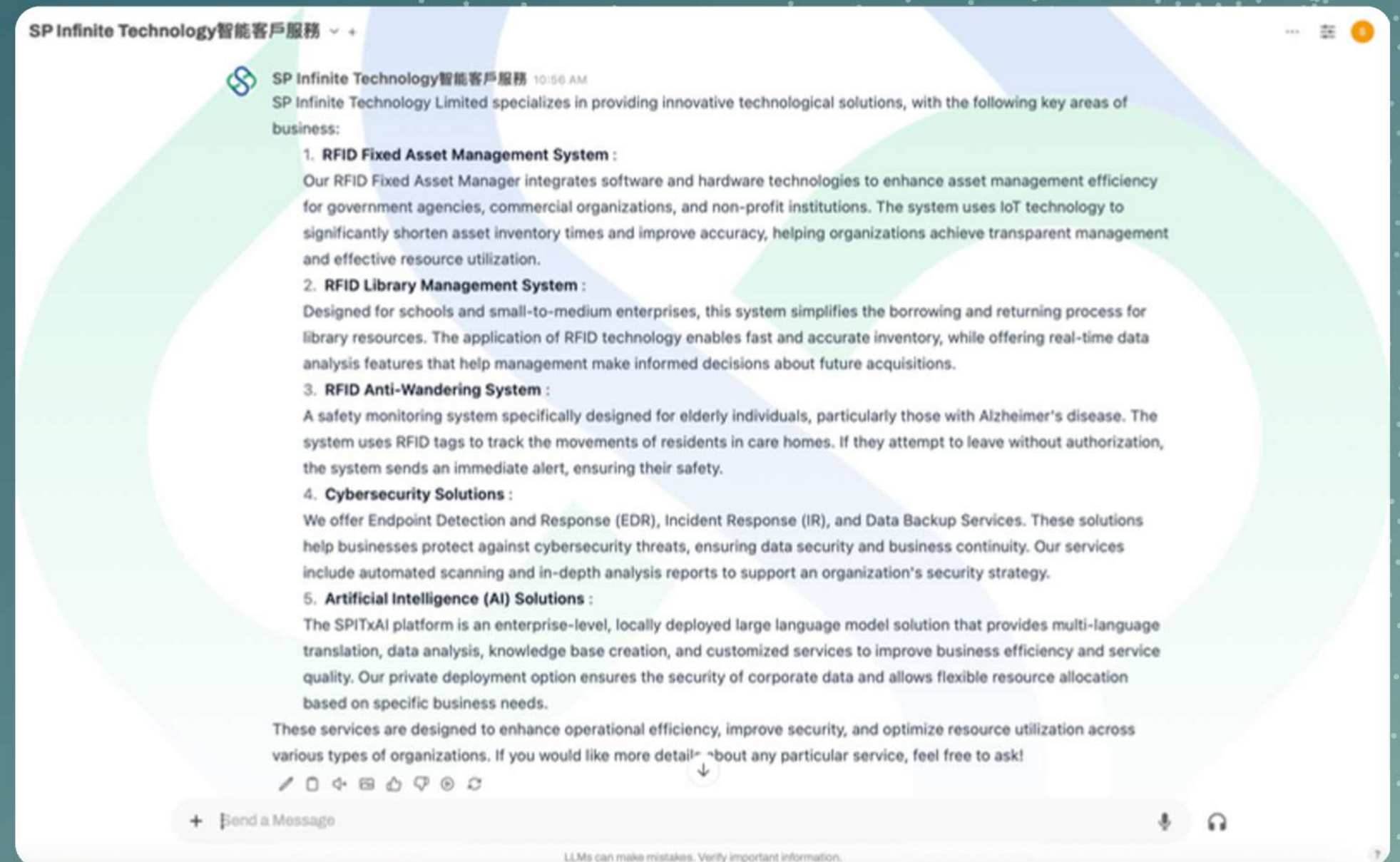
Sensitive information (including salary, health records, and behavioral data) is completely retained within the organisation's network to reduce the risk of data leakage.



Sensitive financial flows, statements, and budget models are completely retained in the in-house computer room to meet the strict audit and traceability requirements of SOX, GDPR, and local financial regulations.

Officers AI Assistant

Officers only need to upload materials related to the business, and AI will respond to questions based on the uploaded materials, helping them grasp the current content more easily.



Tailored Teacher AI Assistant

Workspace for Tailored made


1. Choose LLM

2. Input Prompt (Told the AI “who” it is)
For example: You are a financial officer assistant, your responsibility is ...

3. Input Files (Such as teaching materials)

Workspace

Models Prompts Documents Tools Functions



Name* Carson 工作助手 Model ID* Work Assistant

Base Model (From) o3-mini

Description Default

Model Params

System Prompt

You are my cybersecurity assistant. Your task is to help me understand the latest cybersecurity knowledge and products. You will fulfill the following roles:

1. *Educator*: Explain complex cybersecurity concepts in a simple and easy-to-understand

Advanced Params Show

Prompt suggestions Default

Knowledge

To add documents here, upload them to the "Documents" workspace first.

Select Documents

Tools

To select toolkits here, add them to the "Tools" workspace first.

Filters

To select filters here, add them to the "Functions" workspace first.

Actions

To select actions here, add them to the "Functions" workspace first.

Capabilities

☒ Vision ☒ Usage

Tags

+ Add Tags

SP Intelligence



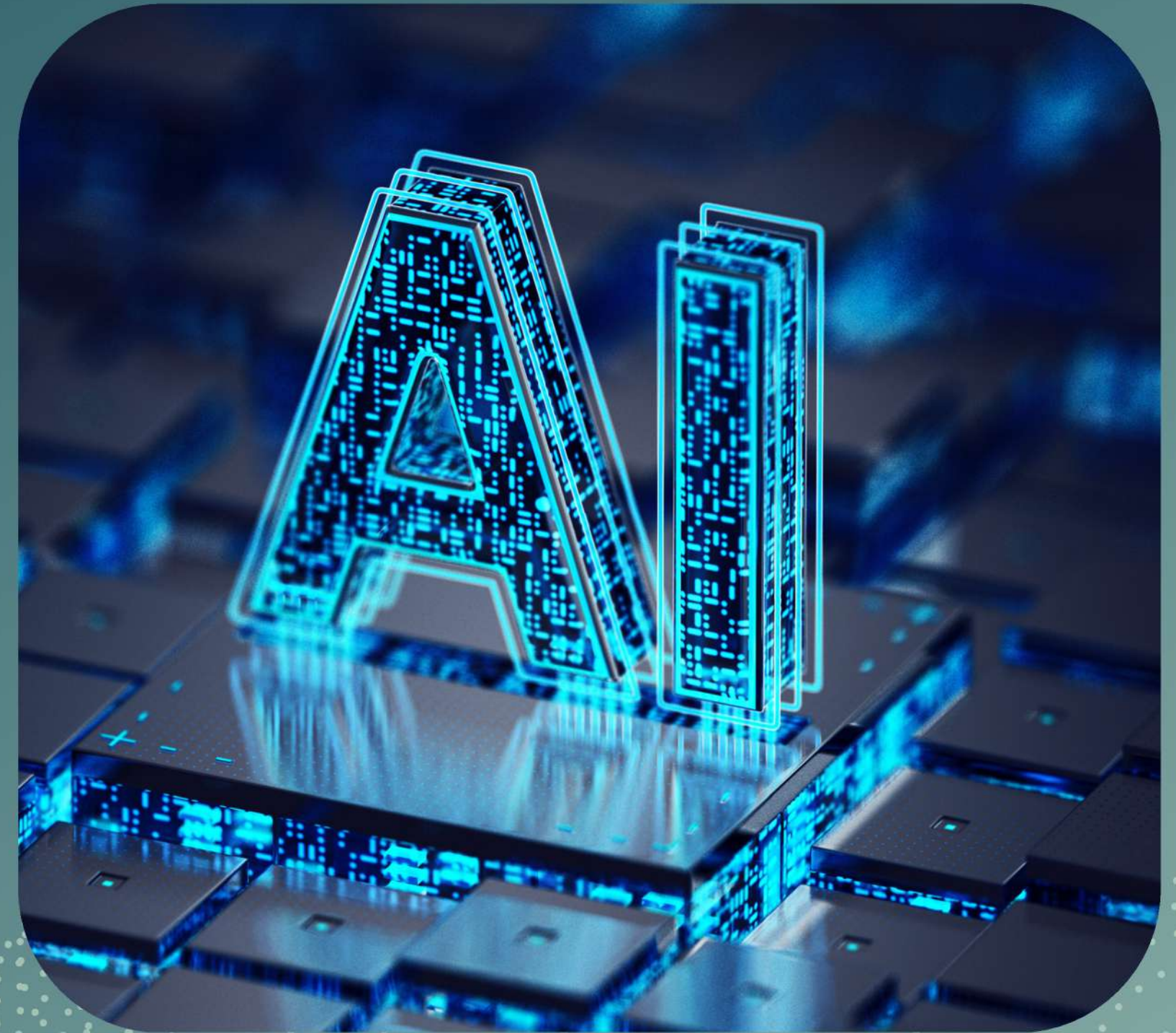
Email Classification
For School/Enterprise



Local AI Assistant
On-Premises/Online

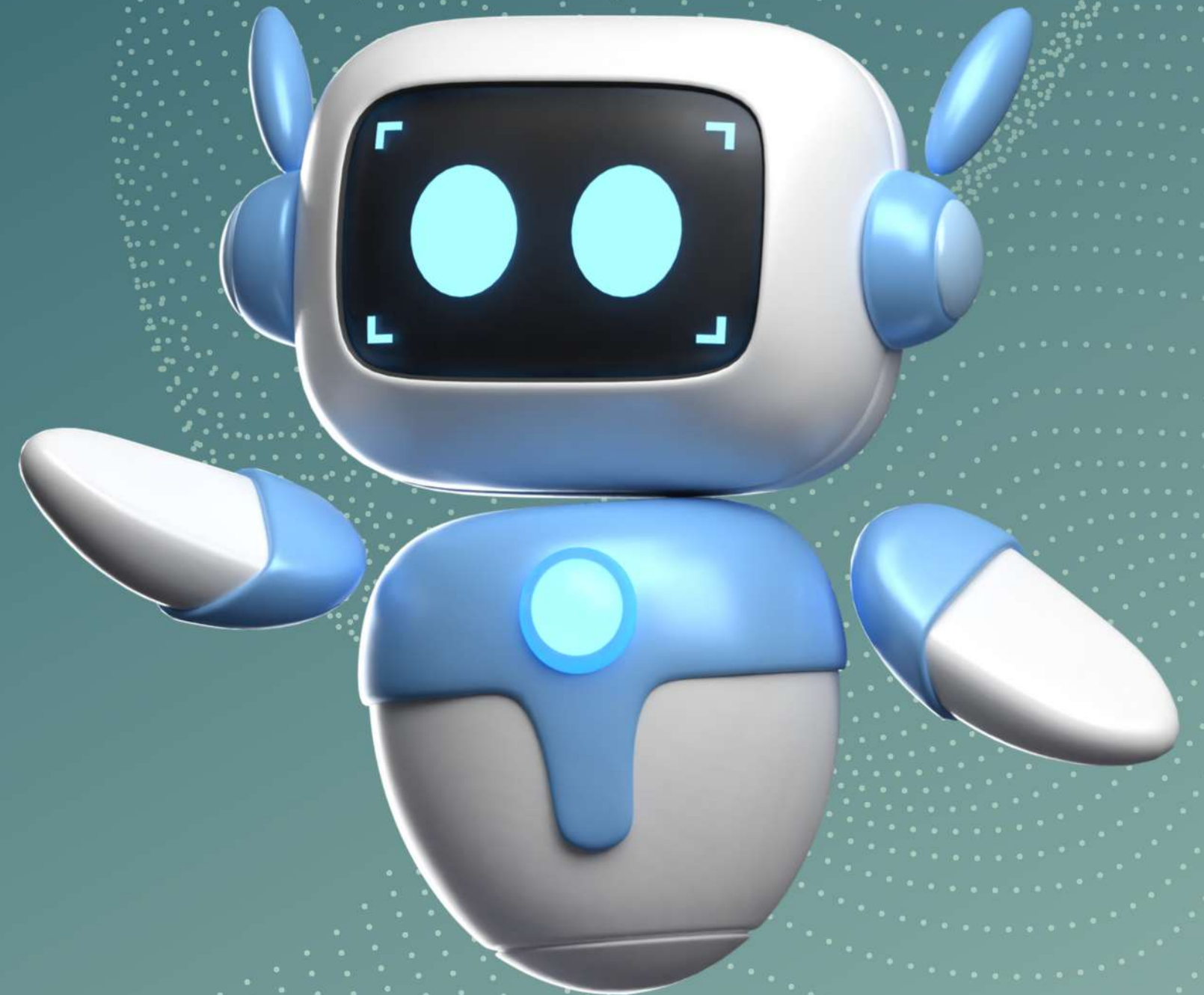
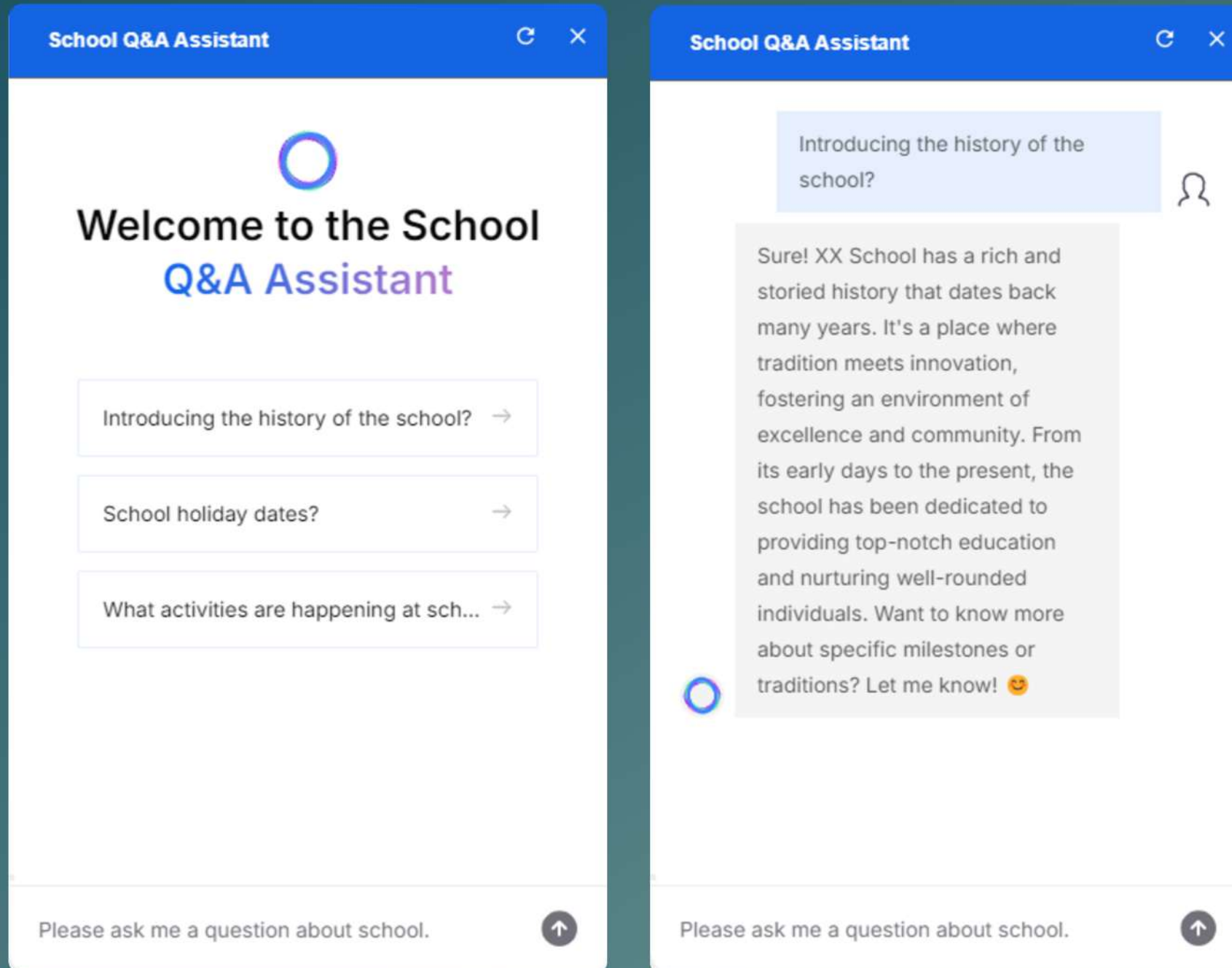


Website Chatbot



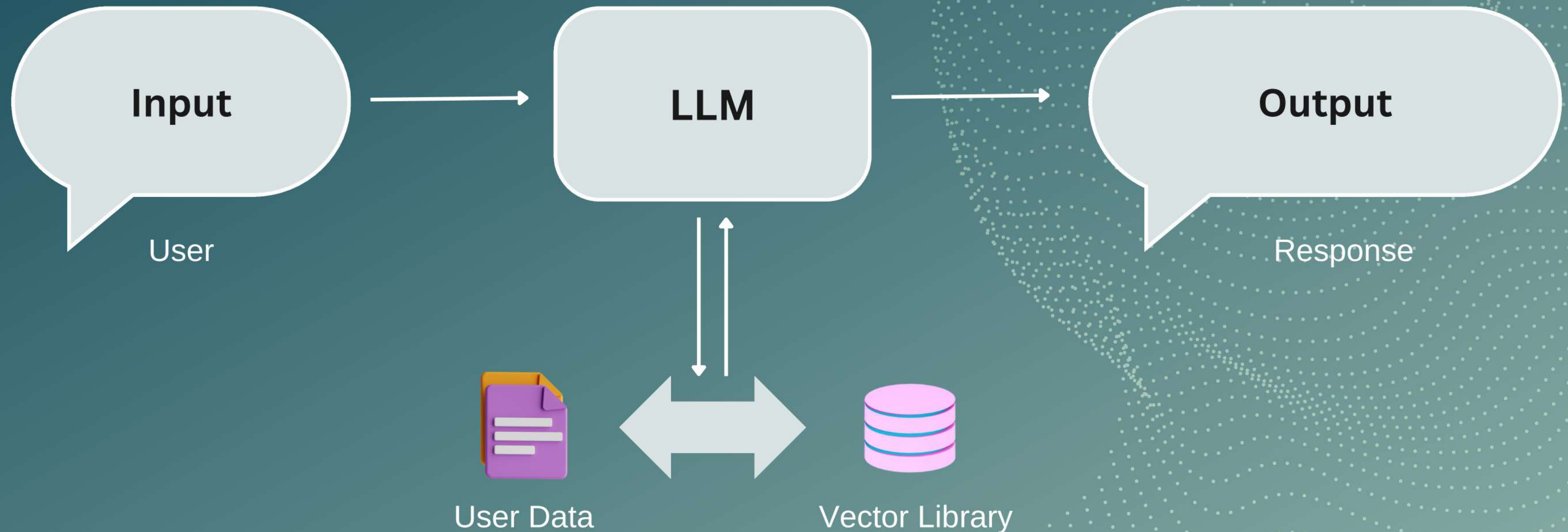
Website Chatbot For Organisation

The Organisation Q&A Assistant is a dedicated chatbot designed to provide students with accurate information and support.



Website Chatbot for Organisation

Retrieval-Augmented Generation (RAG) enhances response accuracy and relevance by integrating advanced information retrieval techniques with powerful generative models.



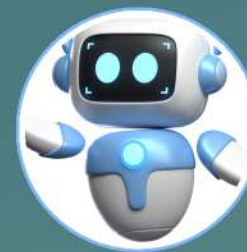
Website Chatbot for Organisation

The organisation chatbot utilizes provided data to accurately interpret and respond to user queries. It offers precise, data-driven answers across various topics, effectively supporting officers.



Introduce the your business, like FAM

The RFID Fixed Asset Management System improves efficiency by accelerating inventory speed, reducing errors, and enabling instant data updates. It offers real-time asset tracking, ensures security with access permissions, and helps organizations save time and costs while enhancing asset management accuracy and security.





SP Infinite
安寶創科有限公司

SP Intelligence